



English version

---

## THE COMPANY

### OUR HISTORY

**ALBA S.r.l** was born in 2011 from the acquisition of Interservice s.p.a, from which it inherits its structure, experience, know-how and the staff.

Interservice s.p.a, was born in 1996, provided to public and private technical services related to the implementation of major infrastructure such as Topography, Design, Construction Management, Computation, Quality, Safety, Archives Management and Printing Services, becoming over the years a company of national importance in its field.

### WHAT WE DO - COMPLEMENTARITY OF SERVICES

**ALBA S.r.l** offers integrated services to companies such as:

- Integral project documents management, administration and accounting, etc...
- Digitizing paper archives (digital archiving)
- Logistical and documentary management of any type and forms of archives
- Printing, scan, and copying
- Data processing
- CAD service
- Design
- Topography, cartography and photogrammetry
- Computation and accounting jobs
- Construction Management
- Safety on construction sites

### OUR MISSION: CUSTOMER SATISFACTION

Provide added value to public and private companies, through INTEGRATED, FLEXIBLE, PERSONALIZED AND PUNCTUAL engineering services.

Become employees of confidence for all the parties involved in the real estate, industry, infrastructures and trade constructions.

Our goal is always the same: "*customer satisfaction*".

The quality of the results is our main goal...

***...ask our Clients what they think of us!***

### WHY CHOOSE ALBA?

We feel strong because of the wide range of services we offer, the experience gained, the staff of professionals (Engineers, Architects, Surveyors, Archivists, Accountants, and Administrative employees), the knowledge of Customer problems and needs, the

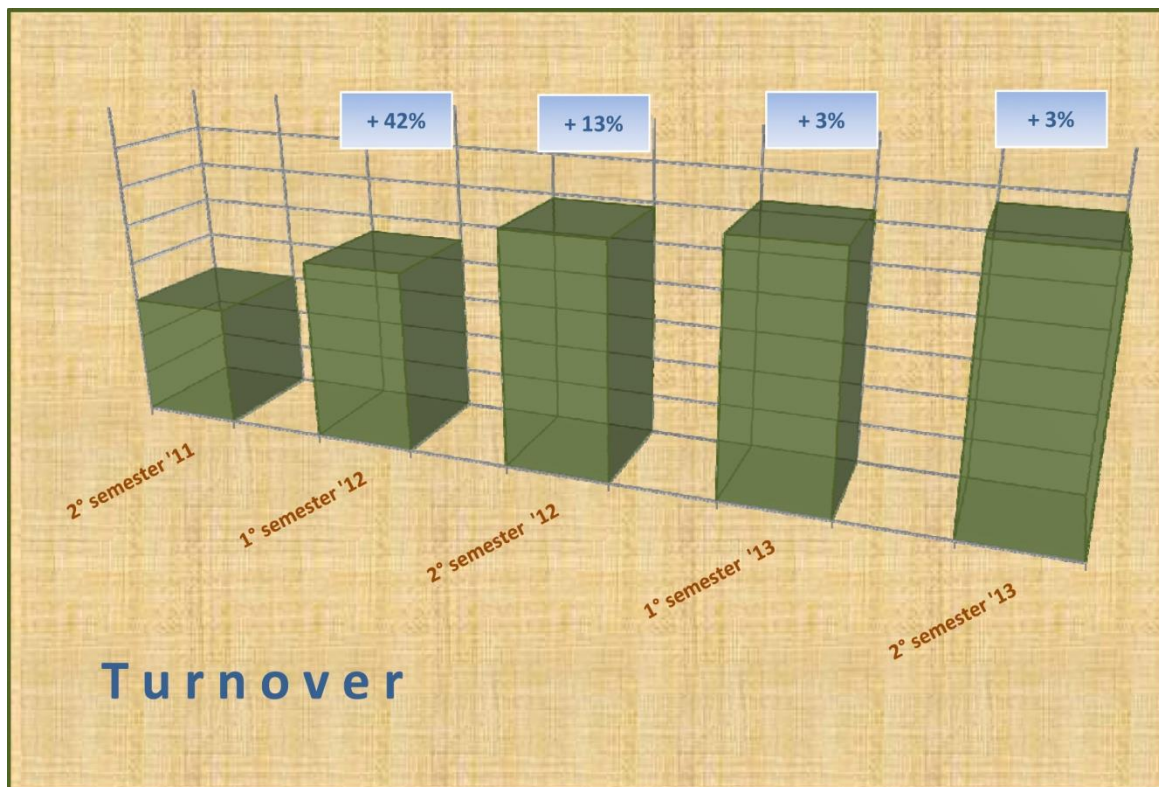
punctuality, the cutting-edge machinery and equipment, the great flexibility and availability of our company on the whole national territory,

*... and all this at affordable prices!*

## INCREASING SATISFACTION

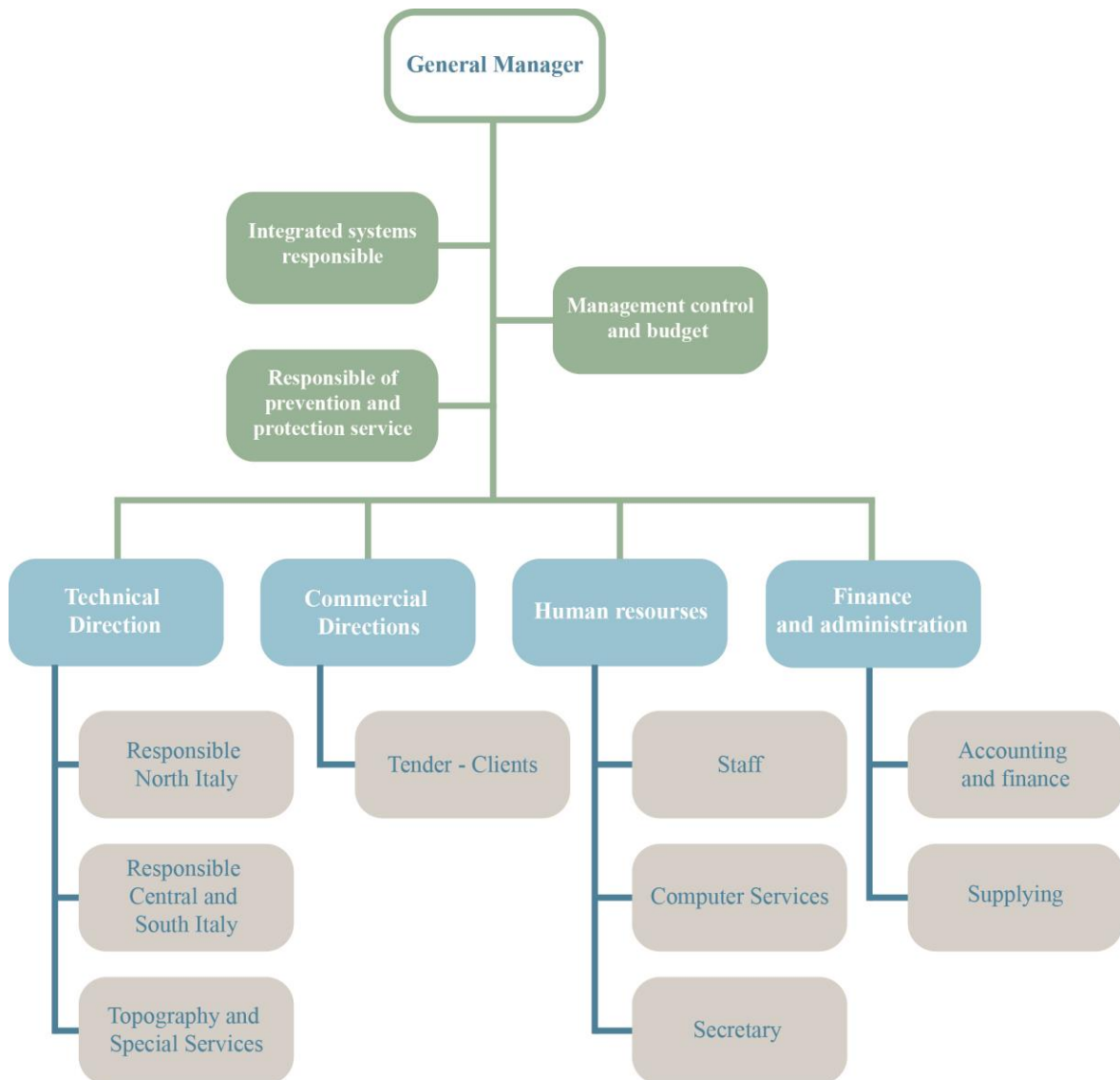
Throughout the years of activity, our company has grown, despite the difficulties, because of the tenacity and commitment of its entire organization. This is why we are proud of our budget which has a prominent position in our industry.

A good entrepreneurial intuition remains empty and unprofitable without a close-knit, motivated and well-structured working team.



## ORGANIZATIONAL CHART

Our company is structured as follows:

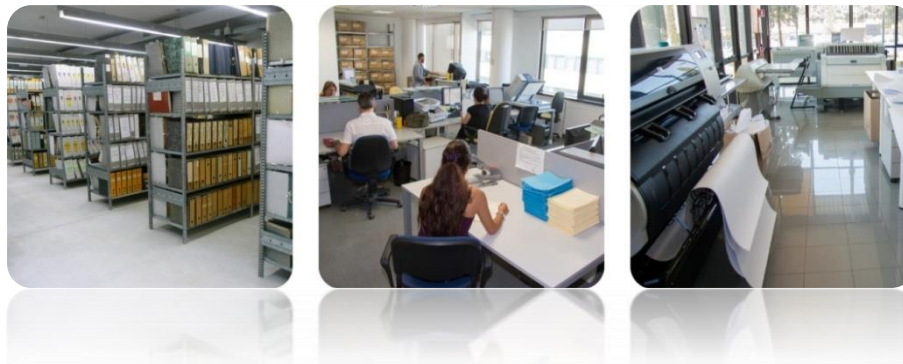


## OUR SERVICES

The analysis of specific trends and various customer requests, has favored a corporate development aimed at providing, in intervention areas, an integrated package of services that offers solutions to different issues.

Integral Management of the project documents, Controlled Distribution of the reproduced documents, Archives Computerization and Management, Data Processing, CAD Service, Metric Calculations, Quality Control, Work Safety, Design, Surveying, Construction and Major Projects Management, those are all activities that, for their wide range of interest in the services for engineering companies, make **ALBA S.r.l** a unique company in its kind.

## DIGITIZING AND ARCHIVE MANAGEMENT

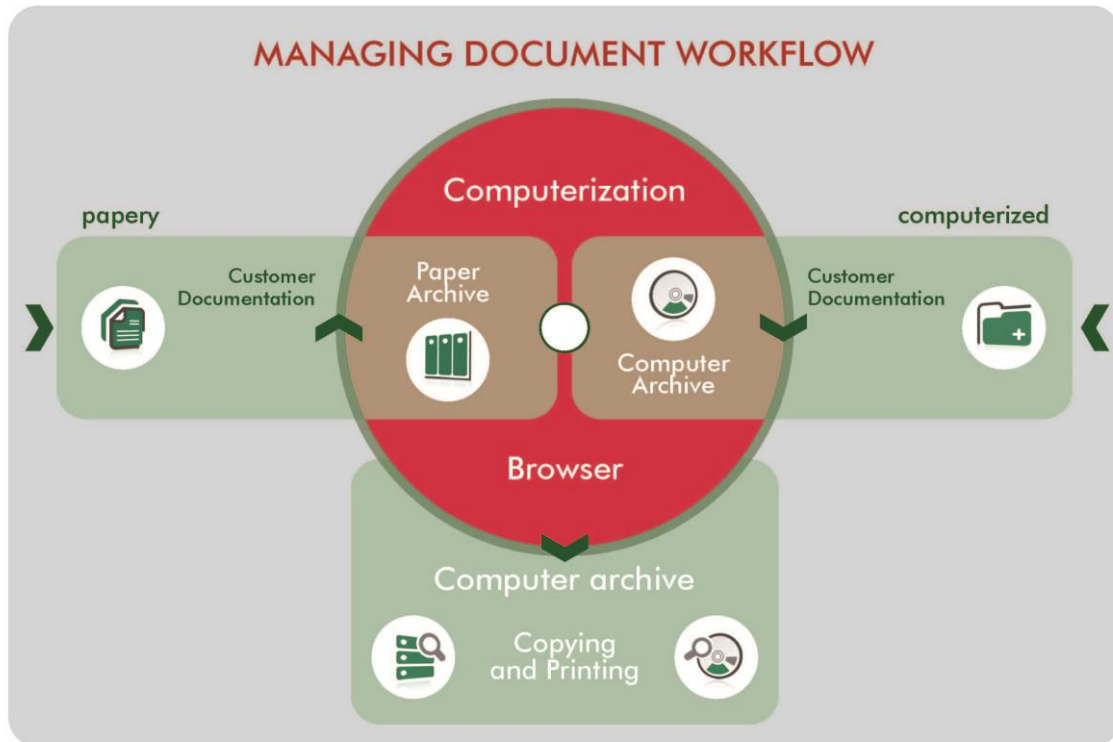


**ALBA** offers an integrated service of paper archives document management, suitable for any need. We develop a dedicated archive project with our Customers, in order to simplify and speed up the tracking procedure, the reference and the printing of any document. In this way, your company regains physical spaces otherwise unusable and especially it highly accelerates the research of paper documents remained for years “buried” and in fact not anymore useful.

From A to Z, we think of it all, to provide the Customer with a “turnkey” package:

1. Paper documentation pick up from the locations indicated by the Customer
2. Drafting of a customized archiving procedure
3. Software customization according to the procedure
4. Documentation verification, coding and indexing
5. Documentation optical acquisition and image connection to the database
6. Populating Data Bank
7. Software and hardware installation at the customer site (optional)
8. Paper archive new cataloging and arrangement at our offices
9. Redelivery to the Customer of the printed documentation, reordered and digitized or alternatively custody of the documentation at our offices

10. Storage on CD-ROM/DVD/server, including data and related images
11. Consultation of the new Data Base both in local mode (at the Customer site) and online from a simple web station... **...WHEREVER YOU ARE!**
12. Alternative archives storage (optional)



## COPYING AND PRINTING

The network of Media Centers distributed throughout the territory, allows the immediate delivery of each type of printing at the locations indicated by the Customer.

We execute:

- Photocopies and prints from files B/W and color in standard and non-standard format
- Coil binding, comb binding, strip binding, book-style binding, ring binding, etc...
- Rasterization and vectorization
- OCR text recognition
- CD/DVD/HD/NAS copies
- Consultancy and graphics processing
- Print on demand
- Collection and delivery in 24 h

## DESIGN AND PROJECT MANAGEMENT

**ALBA** works in the field of architectural, plant, and infrastructures Designs taking care of all the processes necessary to the work execution with a single priority: meet the Client needs. The following services are offered:



- Architectural, plant, and infrastructure design (preliminary, final, and execution design, in addition to structural calculation)
- Project Management
- Testing
- Construction Management
- Coordination of the Workplace Safety D.L. 81/08

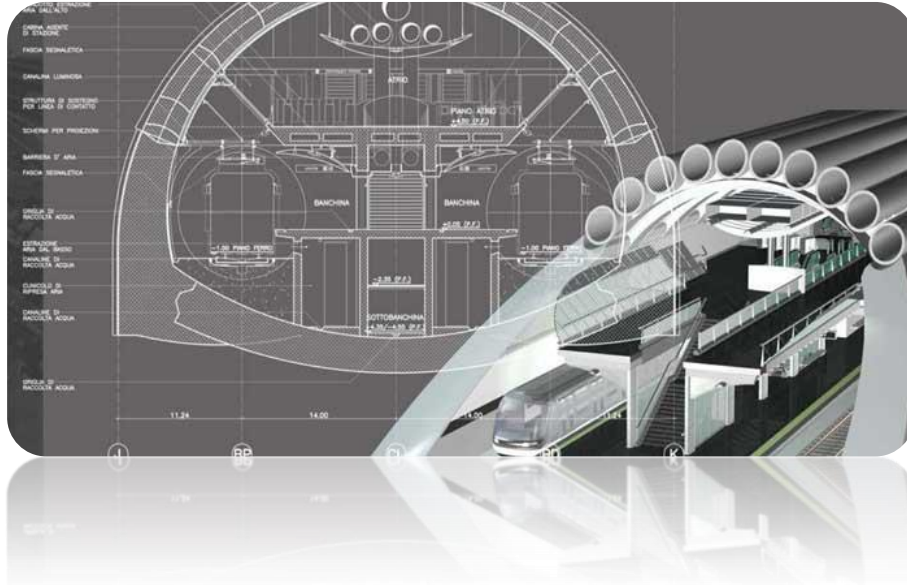
As a professional Project Manager, we manage the construction projects from the beginning to the final delivery, monitoring the schedule, the financial and economic aspects, the design, the permissions from public administrations, the construction organization, the testing and all needed for an appropriate execution of the works.

The Know-How acquired through prestigious achievements and the consolidated cooperation with public and private Customers, have strengthened the significant presence of our company in the context of the construction and infrastructural transformations of the territory.

## CAD SERVICE

**ALBA's** CAD Service department works in a direct and constructive manner with the Customer, by offering editing services, processing and editing of CAD technical drawings, including the relevant assistance. With the support of highly experienced technicians operating in the field since many years, **ALBA** provides technical customized solutions.

In addition, the company develops its own software applications dedicated to speed up documentation management and operations automation.



We offer our Clients electro-technical, regulatory and computer knowledge. It is our priority to make the business internal structure increasingly flexible in order to ensure, in addition to high quality services at competitive costs, fixed intervention schedule. This is made possible by the continuous progress of the instruments used and the careful analysis of the proposals and solutions offered by the market.

## **TOPOGRAPHY, CARTOGRAPHY AND PHOTOGRAMMETRY**

The ongoing staff training and the vehicle-fleet update represent a priority for our company.

Our topographic teams are provided with all means, even off-road vehicles, so that they can reach any point in the territory regardless of the climate condition.

Topographic surveys are carried out with cutting edge instruments, which enables us to achieve a good operation, a high precision, and a definite timeframe.

Methodical checks are carried out on the equipment used in order to eliminate any doubts about measurements precision and correctness.

Surveys can be conducted with the support of several topographic teams which operate in parallel.

In detail, here are the works performed by **ALBA**:

- Monitoring and static tests on road and railway works
- GPS and topographic networks classification
- Polygonal precision



- Surveys and adjustments in absolute coordinates of railroad tracks
- Tunnels profilometer surveys for the coating check
- Archeological surveys



## **JOBS ACCOUNTING**

By adopting a quality system according to UNI, EN, ISO 9001:2008, **ALBA** ensures a strict filling, storage and work/infrastructure accounting management services, both public and private, in accordance with the requirements requested by the existing national and European legislation.

Executing a work of quality for each company is equivalent to a benefit at the organizational level, on the costs, on the relations with the Client and on the final product.

## CERTIFICATION



### QUALITY CERTIFICATION

In order to coordinate and monitor the Company's provided product and services quality and to identify the margins of continuous improvement of both services quality and organization efficiency, with the Customer satisfaction as primary goal, our company has adopted a quality system according to our sector standards, UNI, EN, ISO 9001:2008:

- EA 28** - *"Construction companies, plants installers and services"*
- EA 33** - *"Information technology: design, maintenance and software development for storage systems and document management"*
- EA 34** - *"Technical consulting studies and engineering"*
- EA 35** - *"Service for storage, and physical and optical documents management through computerized systems"*

### ENVIRONMENTAL MANAGEMENT CERTIFICATION

**ALBA** is particularly aware of the environmental impact of its services, for this reason it got certified according to the UNI, EN, ISO 14001:2004 (EA 28, 33, 34,35) standards. This type of certification is not mandatory, but the result of our company choice to activate, maintain and improve its own environmental management system.

The ISO 14001 certification neither declares a particular environmental performance, nor demonstrates a low or zero impact. It rather demonstrates that the certified organization

follows an appropriate management system to keep under control its own environmental activities impact. Moreover, it shows that the company seeks to improve in a coherent, effective and especially sustainable way.

## WORKERS' HEALTH AND SAFETY CERTIFICATION

By obtaining the certification of compliance with BS, OHSAS 18001:2007 (EA 28, 33, 34, 35), **ALBA** got equipped with a system that allows an adequate control on Workers' Health and Safety.

OHSAS certification proves our voluntary decision to keep a high and constant attention on workers' safety.



## ENVIRONMENT AWARENESS

In 2012, **ALBA** has obtained the FSC certification as an authorized user of paper having the FSC trademark.



## WHAT IS "FSC" CERTIFICATION



The FSC certification (Forest Stewardship Council) is the main mechanism of guarantee of the wood or paper origin. It is an international certification system that ensures that raw materials used to create a wood or paper product, comes from forests where rigorous environmental, social and economical standards are met.

The FSC trademark guarantees that the forest of origin was controlled and evaluated independently in accordance with these standards (principles and criteria of good forestry management), established and approved by the Forest Stewardship Council per instance through the participation and the consent of the parties involved.

The FSC was created in 1993, it is an international NGO, independent and nonprofit organization. It includes among its members: environmental and social groups, indigenous communities, consumer associations, forest owners, specialists, certification bodies, first processing, transformation, and marketing wood industries, scientists and technicians working together to improve forests management worldwide.

Forests provide us with clean water, fresh air and help fighting global warming. When they are managed responsibly, they give large contributions to the local communities and to the whole world. But, unfortunately in some countries, the 80% of forests are cut illegally in violation of human rights.

## ENVIRONMENTALLY FRIENDLY PRINTING

One of the major problems that affect environment is the great quantity of paper that is used daily worldwide often for completely unnecessary reasons. Hectares and hectares of forests are crumpled and end up in a trash can each day, because of printing stacks of unreadable tables, perhaps for pure routine and formalities.

The recent environmental disciplines and the public pressure require new "models" and this inevitably creates new business conditions. Consumers, and the public in general, pay greater attention to businesses messages and initiatives. Therefore, the development of very functional and eco-compatible solutions helps to differentiate the offer, allowing enterprises to compete on multiple levels.

Some firms have announced their willingness to put in place a comprehensive program of paper media, resources and web tools to help customers identify the most suitable kind of paper, and the most correct way to print respecting the environment.

Sometimes, it is essential to print documents even for those who care about the paper consumption. In these cases, the fundamental rule is to use recycled paper. What is less known, is that some cautiousness may be taken from the printer side, with regard to the consumption of ink. A higher printing efficiency can be obtained using ecological cartridges that last longer, with the right settings.

Moreover, the printing and packaging industry have different means to offer printed packages that help reduce wastage or increase recycling or reuse substrates and ink.

A reality already in test on the market, obtained thanks to the collaboration between public and private sectors, is a non-toxic ink, ecological and edible. It is specially designed for the disposable print, which saves the forests and offer no contamination risk for food.

It was made by the dyes used in the cakes pastry, modified to suit offices ink jet printers, and it costs less than the traditional ink. A prototype compatible with the most popular models of printers exists. It was created to solve the problem of ink misuse and its resistance on any type of printing paper, even on the papers that will be discarded within few hours.

Many people and organizations, who have realized that the Earth has limited resources that should to preserved and renewed, are working together on issues of common interest. As a result of the United Nations Conference on sustainable development in 1992, representatives of the companies involved, of the social group, and the environmental organizations have gathered and established the Forest Stewardship Council (Council for Forest Protection). Its purpose is to improve forests management. Nowadays, FSC is the only internationally recognized standard for the organization responsible for the forest management supported by the business sector, the environmental organizations and the social groups.

The process of giving the definition standard FSC is transparent, democratic, fair and solidarity-based. It offers a lot of opportunities for the public interested. This process has allowed FSC to become an important and recognized forum which innovative solutions are made possible thanks to the support of all groups interested in forestry issues.

Reasons why FSC choice makes a difference:

- Prohibits the conversion of natural forests and other habitats all over the world
- Bans the use of dangerous pesticides globally
- Forbids the cultivation of genetically modified trees (GMO)
- Respects indigenous people rights worldwide
- Checks every certified operation at least once a year

The FSC products range grows every day. Currently, almost every product is available in FSC quality and generally they are not more expensive than the non-certified products, and they often have a better quality.

FSC offers a simple solution to the complex problem of the environmental and social issues.

FSC brand is an effective way to obtain consumers appreciation. This gives credibility with customers and trading partners, as well as financial institutions and supervision organizations. FSC certification helps protect the brand and its reputation, it also allows to access ecologically sensitive markets.

FSC is a worldwide recognized standard and the only one that is not an obstacle to trade within the World Trade Organization (WTO).

## **TYPES OF FSC PAPER**

In the frame of paper producers' certification, there are 3 types of different products:

- 1) **FSC pure:** paper made entirely with FSC cellulose
- 2) **FSC mixed:** paper made with varying percentages of FSC certified material and controlled forests fibers
- 3) **FSC mixed and recycled:** paper made with varying percentages of FSC certified material, and recycled controlled material

Upon Customer request, **ALBA** can use any kind of the above mentioned type of paper.

## LET US NOT PUT TOO MUCH BURDEN ON THE ENVIRONMENT

The environmental certification acquired by our company includes a series of internal procedures and measures, simple but effective, which makes it possible to limit energy waste, and reduce our services impact on the environment. Some examples are:

- On/off lighting sensors in common environments;
- Automatic switch-off of machines, printers, and pc after a certain time of inactivity;
- Separate collection of waste in the offices;
- Separation of remaining papers used in copy centers (clean, B/W, color);
- Reuse of clean papers after large formats cutting.

## THE MAIN CUSTOMERS



- ACEA A.T.O. 2 S.p.A.
- ANAS S.p.A.
- A.L.E.R. Varese
- API NOVA ENERGIA S.r.l.
- CEFALU' 20 S.c.a.r.l.
- Consorzio CEPAS UNO
- Consorzio CO.C.I.V.
- EUROLINK S.c.p.A.
- JRC EUROPEAN COMMISSION
- GLF S.p.A.
- IMPREGILO S.p.A.
- ITALFERR S.p.A.
- METRO C S.c.p.A.
- PEDELOMBARDA S.c.p.A.
- SA-RC S.c.p.A.
- RC-SCILLA S.c.p.A.
- SIS S.c.p.A.
- S.M.A.T. S.p.A.

**OUR OFFICES**



**Office in Rome**

Registered offices and  
Headquarters

Via Zoe Fontana, 220  
00131 ROMA  
Tel. 06.23 29 141  
Fax 06.23 23 96 78

**alba@alba2011.com**

**Office in Milano**

Headquarters

Via dei Missaglia, 97  
20142 MILANO  
Tel. 02.444 22 187

**csmilano@alba2011.com**



**Office in Genova**

Headquarters

Via Renata Bianchi, 40  
16152 GENOVA  
Tel. 010.89 966 71

**csgenova@alba2011.com**



[www.alba2011.com](http://www.alba2011.com)